

CORNERSTONE REALTY, INC.
YOUR FOUNDATION FOR BUILDING SUCCESS

P.O. Box 151

Waterbury, CT

06720

FOR LEASE

Immediately off I-84 and Route 8 Interchange

237 East Aurora Street, Waterbury, CT



4,742 Square Feet of Office/Flex space

\$4.50 NNN

AMENITIES:

Conveniently Located

Move in condition, with updated built out offices

Open storage area in rear with possible drive in

Bright and Clean Space

Call to set up a no pressure property tour today!

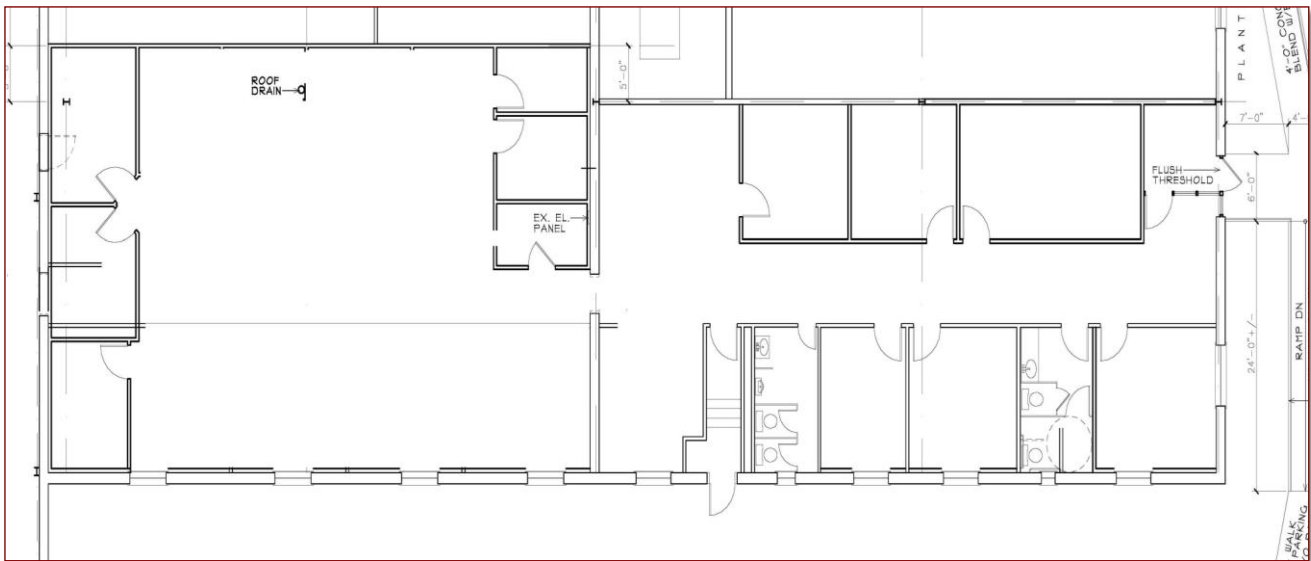
(203) 597-0400 ext. 329



Location:



Floor Plan:



CORNERSTONE REALTY, INC.
YOUR FOUNDATION FOR BUILDING SUCCESS

- *We are a Waterbury based real estate investment and property management company owning and managing approximately 2 million s.f. of industrial/warehouse and office properties
- *Over 95% of our tenants renew – a testament to customer/tenant satisfaction

Contact: Jeff McLellan (203) 597-0400 ext. 329 jmclellan@cmcict.com